

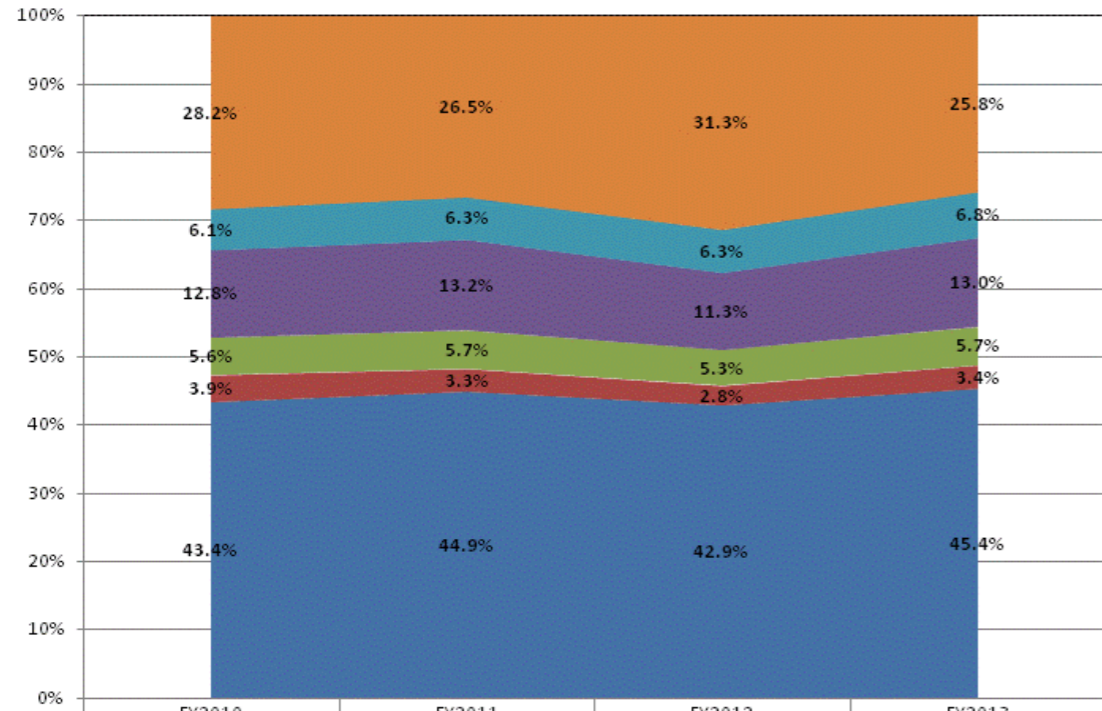
**School Corporation Expenditures by Expenditure Type**  
**Biannual Financial Report Data July 2012 - June 2013**  
**Community Montessori Inc (9320)**

**Community Montessori Inc (9320)**

	FY 2006	FY06 % of Total Exp	FY 2009	FY09 % of Total Exp	FY 2012	FY12 % of Total Exp	FY 2013	FY13 % of Total Exp
Student Academic Achievement	\$799,608	16.3%	\$1,135,637	30.6%	\$1,471,289	42.9%	\$1,511,354	45.4%
Student Instructional Support	\$127,609	2.6%	\$266,438	7.2%	\$280,598	8.2%	\$304,594	9.1%
Overhead and Operational	\$421,297	8.6%	\$774,715	20.8%	\$603,803	17.6%	\$657,416	19.7%
Nonoperational	\$3,570,274	72.6%	\$1,539,475	41.4%	\$1,071,510	31.3%	\$857,943	25.8%
<b>Grand Total</b>	<b>\$4,918,788</b>		<b>\$3,716,265</b>		<b>\$3,427,199</b>		<b>\$3,331,307</b>	

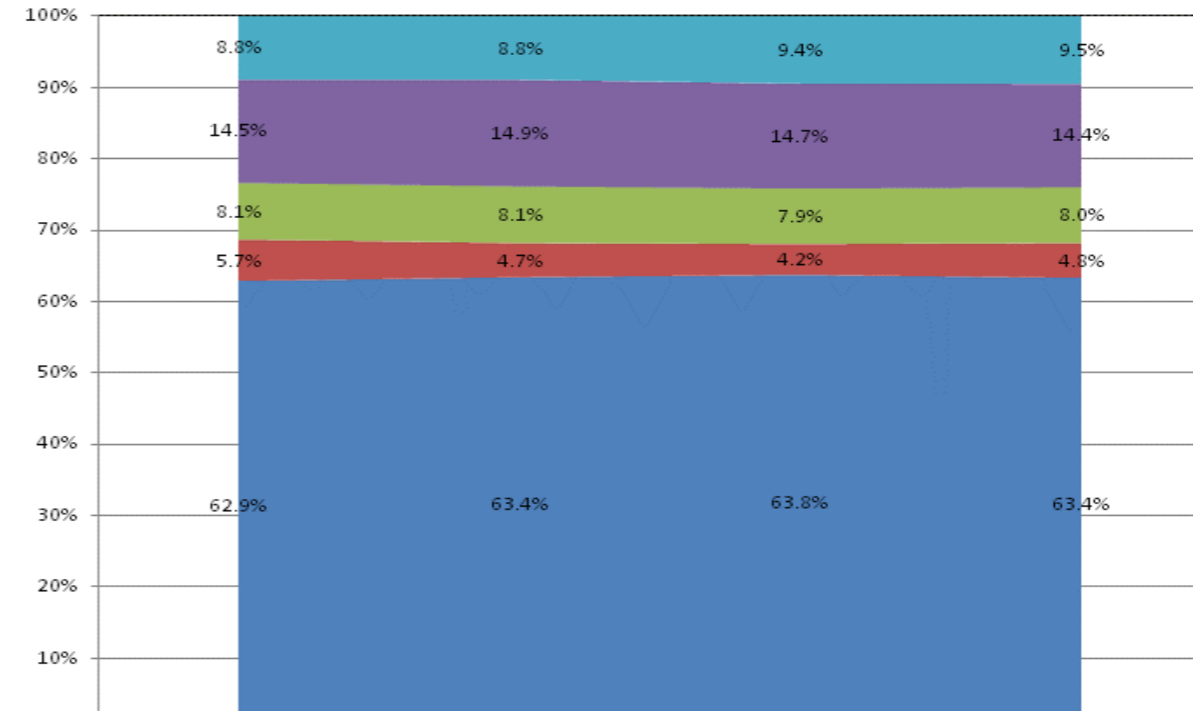
	FY 2006	FY 2009	FY 2012	FY 2013
<b>Student Instructional Expenditures (Academic Achievement plus Support)</b>	<b>18.9%</b>	<b>37.7%</b>	<b>51.1%</b>	<b>54.5%</b>

**All Expenditures**



	FY2010	FY2011	FY2012	FY2013
Non-Operational	28.2%	26.5%	31.3%	25.8%
Other Overhead and Operational	6.1%	6.3%	6.3%	6.8%
Corporation Administration	12.8%	13.2%	11.3%	13.0%
School Administration	5.6%	5.7%	5.3%	5.7%
Other Student Instructional Support	3.9%	3.3%	2.8%	3.4%
Student Academic Achievement	43.4%	44.9%	42.9%	45.4%

**Operational Expenditures Only**



	FY2010	FY2011	FY2012	FY2013
Other Overhead and Operational	8.8%	8.8%	9.4%	9.5%
Corporation Administration	14.5%	14.9%	14.7%	14.4%
School Administration	8.1%	8.1%	7.9%	8.0%
Other Student Instructional Support	5.7%	4.7%	4.2%	4.8%
Student Academic Achievement	62.9%	63.4%	63.8%	63.4%

**School Corporation Expenditures by Expenditure Type**  
**Biannual Financial Report Data July 2012 - June 2013**  
**Community Montessori Inc (9320)**

Account	FY 2006	FY 2009	FY 2012	FY 2013	Increase from FY 2006	Increase from FY 2009	Increase from previous year
<b>Student Academic Achievement</b>							
11025 Regular Programs; Non Spec Ed Preschool	\$0	\$152,852	\$103,388	\$87,922	N/A	-42%	-15%
11100 Regular Programs; Elementary	\$290,180	\$552,994	\$588,467	\$644,849	122%	17%	10%
11200 Regular Programs; Middle/Junior High	\$0	\$190,021	\$216,853	\$212,759	N/A	12%	-2%
11300 Regular Programs; High School	\$0	\$32,260	\$253,815	\$246,377	N/A	> 500%	-3%
11350 Regular Programs; High School; Academic Honors Diploma	\$0	\$0	\$0	\$10,000	N/A	N/A	N/A
11910 Other Regular Programs; Competency Testing	\$200,813	\$3,051	\$2,744	\$2,294	-99%	-25%	-16%
12610 Learning Disability	\$64,731	\$157,593	\$241,156	\$258,151	299%	64%	7%
12900 Other Special Programs	\$2,534	\$4,335	\$35,044	\$21,537	> 500%	397%	-39%
15100 Enrichment Programs; Non-Credit	\$2,786	\$7,484	\$5,499	\$7,541	171%	1%	37%
16100 Remediation Testing	\$3,111	\$0	\$0	\$0	-100%	N/A	N/A
16200 Preventive Remediation	\$0	\$6,437	\$10,840	\$10,150	N/A	58%	-6%
22120 Improvement of Instruction; Instruction and Curriculum Development	\$39,536	\$23,984	\$8,543	\$5,223	-87%	-78%	-39%
22130 Improvement of Instruction; Instructional Staff Training	\$0	\$4,591	\$4,940	\$4,551	N/A	-1%	-8%
22190 Improvement of Instruction; Other Improvement of Instructional Services	\$14,083	\$34	\$0	\$0	-100%	-100%	N/A
22310 Instruction, Related Technology; Technology Service Supervision and Administration	\$51,069	\$0	\$0	\$0	-100%	N/A	N/A
26497 2007 Account Code - Teachers Retirement Fund	\$25,670	\$0	\$0	\$0	N/A	N/A	N/A
<b>Student Academic Achievement Total</b>	<b>\$694,512</b>	<b>\$1,135,637</b>	<b>\$1,471,289</b>	<b>\$1,511,354</b>	<b>118%</b>	<b>33%</b>	<b>3%</b>
<b>Student Instructional Support</b>							
21230 Guidance Services; Appraisal Services	\$4,340	\$285	\$778	\$435	-90%	53%	-44%
21420 Psychological Testing	\$0	\$0	\$4,550	\$4,670	N/A	N/A	3%
21510 Speech Pathology and Audiology Services; Service Area Direction	\$0	\$21,573	\$0	\$0	N/A	-100%	N/A
21520 Speech Pathology and Audiology Services; Speech Pathology Services	\$0	\$0	\$24,068	\$30,025	N/A	N/A	25%
21620 Occupational Therapy, Related Services; Occupational Therapy Services	\$0	\$0	\$10,913	\$21,495	N/A	N/A	97%
21720 Physical Therapy Services; Physical Therapy Services	\$0	\$0	\$0	\$0	N/A	N/A	N/A
21810 Special Education Administration; Service Area Direction	\$0	\$0	\$0	\$0	N/A	N/A	N/A
21990 Other Support Services, Students; Other Student Services	\$23,935	\$80,158	\$57,042	\$57,596	141%	-28%	1%
24100 Office of The Principal	\$82,502	\$164,422	\$183,247	\$190,372	131%	16%	4%
<b>Student Instructional Support Total</b>	<b>\$110,777</b>	<b>\$266,438</b>	<b>\$280,598</b>	<b>\$304,594</b>	<b>175%</b>	<b>14%</b>	<b>9%</b>
<b>Overhead and Operational</b>							
23120 Board of Education; Service Area Assistants	\$0	\$0	\$14,855	\$0	N/A	N/A	-100%
23150 Board of Education; Legal Services	\$53,290	\$0	\$1,684	\$22,575	-58%	N/A	> 500%
23210 Executive Administration; Office of The Superintendent	\$66,938	\$107,558	\$101,844	\$104,669	56%	-3%	3%
23220 Executive Administration; Community Relations	\$12,586	\$13,718	\$17	\$0	-100%	-100%	-100%
25160 Fiscal Services; Financial Accounting	\$2,580	\$14,500	\$13,866	\$2,350	-9%	-84%	-83%
25191 Other Fiscal Services; Refund of Revenue	\$6,187	\$970	\$3,459	\$2,094	-66%	116%	-39%
25195 Other Fiscal Services; Bank Account Service Charge	\$538	\$2,824	\$5,075	\$4,901	> 500%	74%	-3%
25199 Other Fiscal Services; Other	\$1,322	\$22,520	\$10,010	\$5,436	311%	-76%	-46%
25220 Purchasing, Warehousing, and Distribution Services; Purchasing	\$124,505	\$245,454	\$77,616	\$88,945	-29%	-64%	15%
25300 Printing, Publishing, and Duplicating Services	\$5,061	\$6,193	\$6,501	\$5,746	14%	-7%	-12%
25600 Public Information Services	\$1,801	\$2,188	\$1,554	\$2,112	17%	-3%	36%
25710 Personnel Services; Supervision of Personnel Services	\$4,886	\$0	\$0	\$0	-100%	N/A	N/A
25720 Personnel Services; Recruitment and Placement	\$371	\$1,355	\$4,159	\$1,897	412%	40%	-54%
25810 Administrative Technology Services; Technology Services Supervision And Administra	\$0	\$3,808	\$11,876	\$14,903	N/A	291%	25%
25820 Administrative Technology Services; Systems Analysis And Planning	\$0	\$1,689	\$2,125	\$3,976	N/A	135%	87%
25860 Administrative Technology Services; Hardware Maintenance And Support	\$0	\$52,832	\$26,948	\$51,912	N/A	-2%	93%
25890 Other Technology Services	\$0	\$101	\$35	\$0	N/A	-100%	-100%
25990 Other Support Services, Central	\$30,962	\$108,443	\$105,364	\$120,394	289%	11%	14%

**School Corporation Expenditures by Expenditure Type**  
**Biannual Financial Report Data July 2012 - June 2013**  
**Community Montessori Inc (9320)**

<b>Account</b>	<b>FY 2006</b>	<b>FY 2009</b>	<b>FY 2012</b>	<b>FY 2013</b>	<b>Increase from FY 2006</b>	<b>Increase from FY 2009</b>	<b>Increase from previous year</b>
26100 Operation and Maintenance of Plant Services; Service Area Direction	\$3,308	\$56,564	\$68,181	\$71,648	> 500%	27%	5%
26200 Operation and Maintenance of Plant Services; Maintenance of Buildings	\$42,545	\$100,197	\$111,413	\$112,289	164%	12%	1%
26300 Operation and Maintenance of Plant Services; Maintenance of Grounds	\$840	\$7,093	\$6,209	\$7,987	> 500%	13%	29%
26600 Operation and Maintenance of Plant Services; Security Services	\$4,812	\$1,197	\$2,256	\$512	-89%	-57%	-77%
26700 Operation and Maintenance of Plant Services; Insurance	\$25,954	\$19,113	\$23,197	\$24,130	-7%	26%	4%
27700 Student Transportation; Contracted Transportation Services	\$15,648	\$0	\$0	\$0	-100%	N/A	N/A
27900 Student Transportation; Other Student Transportation Services	\$1,914	\$6,400	\$5,557	\$8,940	367%	40%	61%
<b>Overhead and Operational Total</b>	<b>\$406,047</b>	<b>\$774,715</b>	<b>\$603,803</b>	<b>\$657,416</b>	<b>62%</b>	<b>-15%</b>	<b>9%</b>
<b>Nonoperational</b>							
43000 Facilities Acquisition and Construction; Professional Services	\$64,340	\$16,074	\$0	\$0	-100%	-100%	N/A
45100 Building Acquisition, Construction and Improvements	\$3,137,533	\$711,297	\$0	\$0	-100%	-100%	N/A
45500 Facilities Acquisition and Construction; Rent of Buildings, Facilities, and Equipment	\$75,517	\$10,833	\$15,356	\$11,470	-85%	6%	-25%
52200 Debt Services; Interest on Debt; Temporary Loans	\$207,679	\$0	\$0	\$0	-100%	N/A	N/A
53100 Debt Services; Lease Rental; Buildings ; Principal	\$1,866	\$225,730	\$604,787	\$551,645	> 500%	144%	-9%
53150 Debt Services; Lease Rental; Buildings ; Interest	\$0	\$522,115	\$451,367	\$294,827	N/A	-44%	-35%
53200 Debt Services; Lease Rental; Equipment ; Principal	\$3,822	\$0	\$0	\$0	-100%	N/A	N/A
54200 Common School Fund; Principal	\$79,516	\$28,864	\$0	\$0	-100%	-100%	N/A
54250 Common School Fund; Interest	\$0	\$24,561	\$0	\$0	N/A	-100%	N/A
<b>Nonoperational Total</b>	<b>\$3,570,274</b>	<b>\$1,539,475</b>	<b>\$1,071,510</b>	<b>\$857,943</b>	<b>-76%</b>	<b>-44%</b>	<b>-20%</b>
<b>Prorated By Fund</b>							
26491 2007 Account Code - PERF	\$17,903	\$0	\$0	\$0	N/A	N/A	N/A
26492 2007 Account Code - Social Security	\$57,919	\$0	\$0	\$0	N/A	N/A	N/A
26494 2007 Account Code - Group Insurance	\$52,875	\$0	\$0	\$0	N/A	N/A	N/A
26496 2007 Account Code - Unemployment Compensation	\$8,480	\$0	\$0	\$0	N/A	N/A	N/A
<b>Prorated By Fund Total</b>	<b>\$137,178</b>	<b>\$0</b>	<b>\$0</b>	<b>\$0</b>	<b>N/A</b>	<b>N/A</b>	<b>N/A</b>